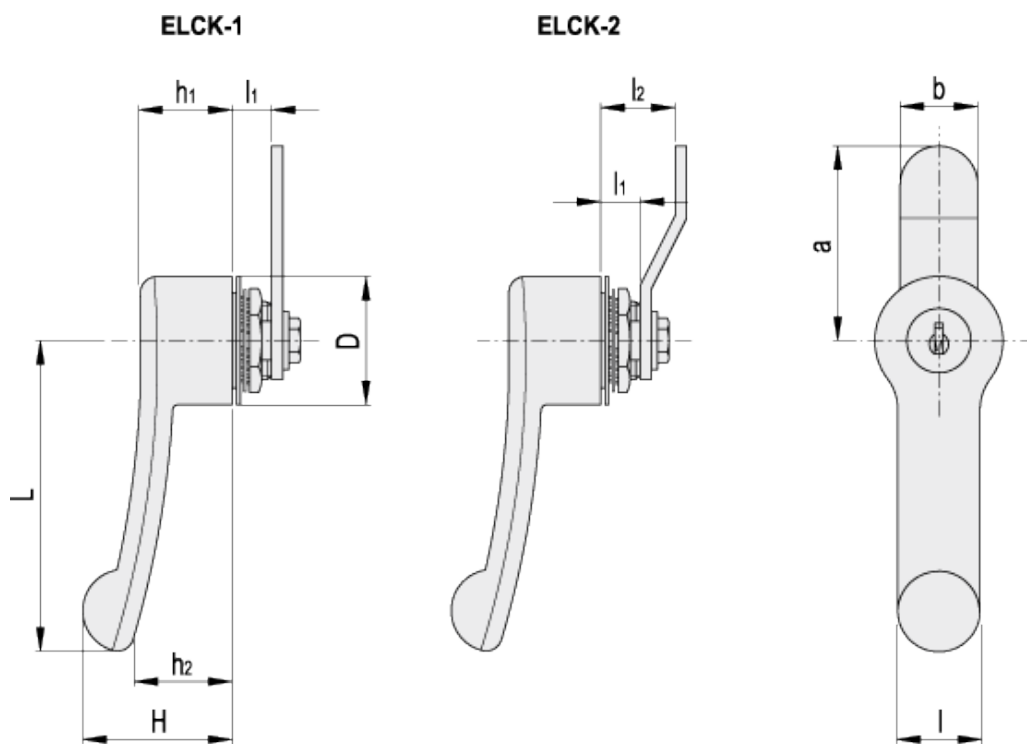


# ELCK

Latch-type levers with lock



ELESA Original design



## technical informations

### Lever

Glass-fibre reinforced polyamide based (PA) technopolymer. Resistant to solvents, oils, greases and other chemical agents.

### Colour

Grey-black, matte finish.

### Lock

- Die-cast zinc alloy stator and rotor;
- lock with stainless steel front plate, movement of the lever at 90°;
- brass locking nut;
- zinc-plated steel spring washer;
- zinc-plated steel positioning washer, thickness 1.2 mm to be welded to the sheet of the door in case of thin thickness;
- two nickel-plated brass keys, removable in two positions (locked or unlocked position).

### Standard executions

Lock with 400 different combinations. Each lock has a key with different combination.

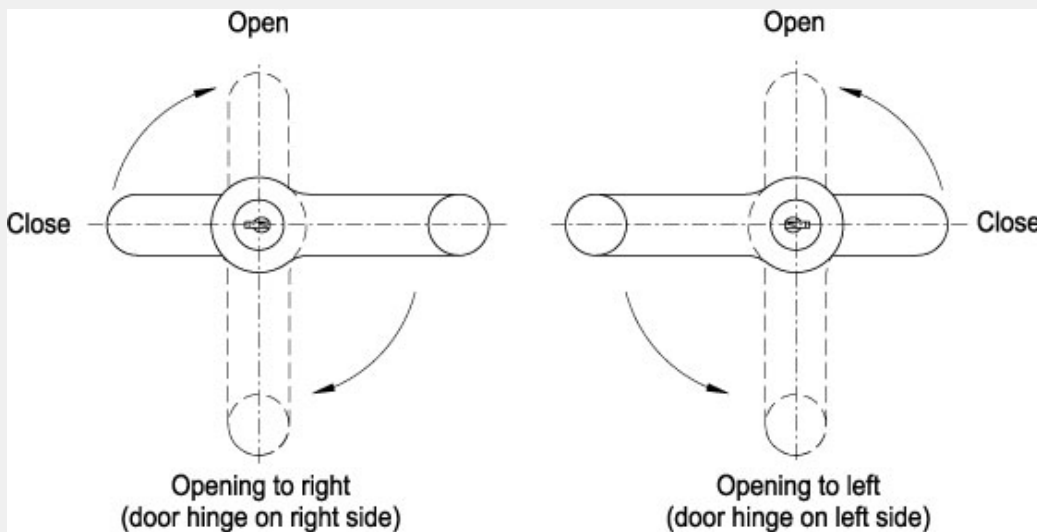
- ELCK-1-D: with zinc-plated steel flat closing lever, opening on the right side.
  - ELCK-1-S: with zinc-plated steel flat closing lever, opening on the left side.
  - ELCK-1-SS: with zinc-plated steel flat closing lever (1), without lock.
- Therefore, the control lever can be used for opening both on the right or on the left side.
- ELCK-2: available in all the above mentioned executions but with folded closing lever.

### Special executions on request

- ELCK-U: lock with one combination: all locks have the same combination and open with the same key.
  - ELCK-M: lock with 160 different combinations and master-key: each lock has a different combination and relative key. Two master-keys, which open all of them, are supplied for every purchase order.
- Even the special executions are available with opening on the right or on the left side, with flat or folded closing lever.

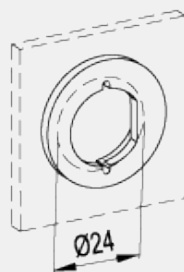
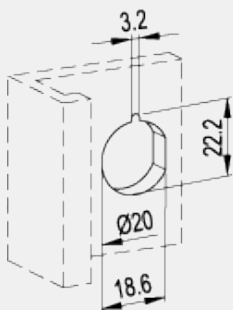
### Accessories on request

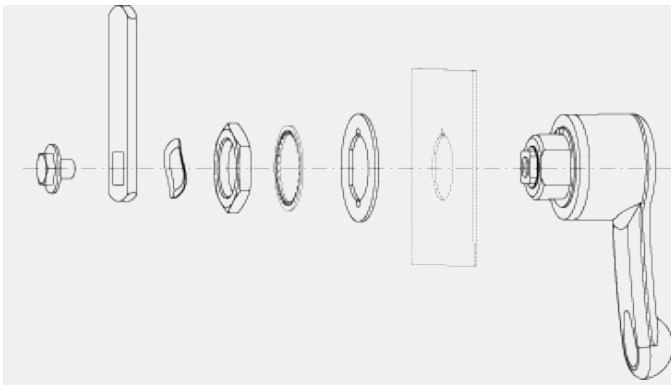
Threaded extension for the positioning of the closing lever with  $l=10$  mm (ELCK with flat lever) or  $l=18$  mm (ELCK with folded lever).



Drilling template for direct fitting

Positioning washer (standard accessory) to be welded to door (when this is too thin for direct fitting)  
 $\varnothing 24$  mm hole





Ergostyle		Main dimensions										Weight
Code	Description	L	D	H	I	h <sub>1</sub>	h <sub>2</sub>	l <sub>1</sub>	a	b	g	
212311	ELCK.67-1-D	67	32	38	20	25	27	10	50	20	140	
212313	ELCK.67-1-S	67	32	38	20	25	27	10	50	20	140	
212315	ELCK.67-1-SS	67	32	38	20	25	27	10	50	20	140	
212341	ELCK.85-1-D	85	37	41	23	25	27	10	50	20	150	
212343	ELCK.85-1-S	85	37	41	23	25	27	10	50	20	150	
212345	ELCK.85-1-SS	85	37	41	23	25	27	10	50	20	150	

Ergostyle		Main dimensions										Weight
Code	Description	L	D	H	I	h <sub>1</sub>	h <sub>2</sub>	l <sub>1</sub>	l <sub>2</sub>	a	b	g
212321	ELCK.67-2-D	67	32	38	20	25	24	10	18	48	20	140
212323	ELCK.67-2-S	67	32	38	20	25	27	10	18	48	20	140
212325	ELCK.67-2-SS	67	32	38	20	25	27	10	18	48	20	140
212351	ELCK.85-2-D	85	37	41	23	25	27	10	18	48	20	150
212353	ELCK.85-2-S	85	37	41	23	25	27	10	18	48	20	150
212355	ELCK.85-2-SS	85	37	41	23	25	27	10	18	48	20	150



ELESA and GANTER models all rights reserved in accordance with the law. Always mention the source when reproducing our drawings.

**STANDARD MACHINE ELEMENTS WORLDWIDE**