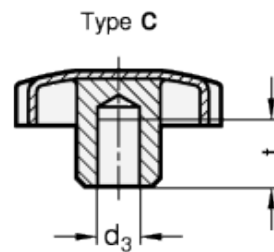
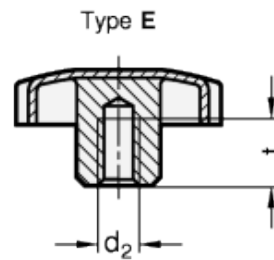
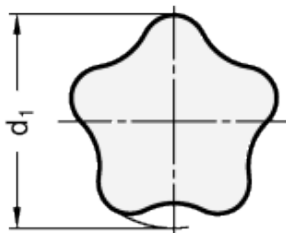
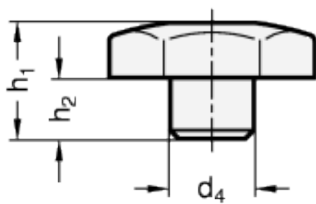


# GN 5334.4

Stainless Steel-Star knobs



INOX  
Stainless Steel



## technical informations

### Material

AISI 316L (A4) stainless steel, hub welded, matt shot-blasted.

### Standard versions available

- Type E: with threaded blind bore.
- Type C: with blind bore H7.

### Features and applications

Original ELESA design, now produced in metal in agreement with ELESA s.p.a.

Standard Elements	Main dimensions				Mounting hole			Weight
Description	d <sub>1</sub>	d <sub>4</sub>	h <sub>1</sub> ≈	h <sub>2</sub> ≈	d <sub>2</sub>	d <sub>3</sub>	t <sub>min.</sub>	g
GN 5334.4-40-M8-E	40	14	24	12	M8	-	15	37
GN 5334.4-50-M10-E	50	18	30	16.5	M10	-	18	68
GN 5334.4-60-M12-E	60	20	37.5	20	M12	-	22	114
GN 5334.4-40-B8-C	40	14	24	12	-	B8	15	37
GN 5334.4-50-B10-C	50	18	30	16.5	-	B10	18	67
GN 5334.4-60-B12-C	60	20	37.5	20	-	B12	22	109



ELESA and GANTER models all rights reserved in accordance with the law. Always mention the source when reproducing our drawings.

**STANDARD MACHINE ELEMENTS WORLDWIDE**